



# Electric Pumps

**Model: ZPE-73HS Series**  
**Max. Operates: Up to 10,000 psi**  
**Power By: 1 HP triple-phase commutator, insulation "E" type motor.**

## Usage:

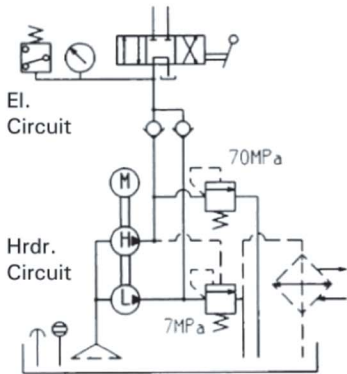
Our ZPE Series electric pumps are designed for a large number of different applications where lifting, pushing, bending, or holding may be required. Ideal for general industry, electric installations, construction industry, ship yards, material handling, etc.

## Special Features:

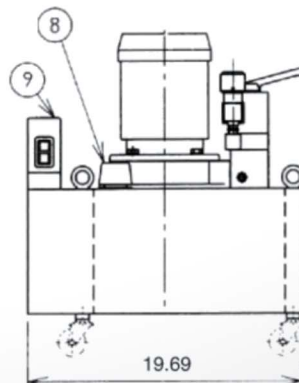
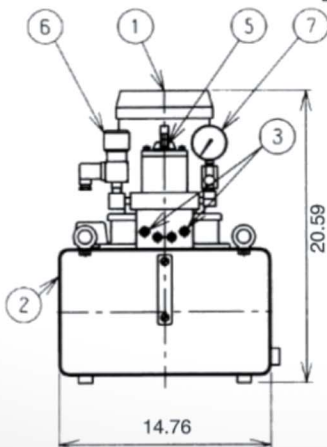
1. The ZPE-73HS Series come equipped with a pressure gauge and are enclosed with a cooling fan for heavy-duty operation without overheating.
2. Adjustable pressure regulator allows for easy pressure adjustment.
3. Oil level indicator provides easy monitoring of oil level.
4. Eyelet holes for convenient mounting on to fixture.
5. Standard size comes with a 3-way manual valve to use with the single-acting cylinders.
6. 4 ways/3 position valve to use with the double-acting cylinders.
7. Designed to easily accept various kinds of stacking valves such as solenoid valves, relief valves, and check valves.
8. Easy to operate mounted electrical box for on/off operation, remote pendant switches also available upon request.



**ZPE-73HS-7**



- |                      |                             |
|----------------------|-----------------------------|
| 1. Electric Motor    | 5. 4-Way Manual Valve       |
| 2. Reservoir         | 6. Pressure Switch 3/8" NPT |
| 3. Output Port       | 7. Pressure Gauge           |
| 4. Pilot Check Valve | 8. Oil Filter               |
|                      | 9. Power Switch             |



**ZPE-73HS-7**  
**(mount electrical box)**  
**Part# 195414**



# ZINKO

# Electric Pumps

**Model: ZPE-73HS Series**

**Max. Operates: Up to 10,000 psi**

**Power By: 1 HP triple-phase commutator, insulation "E" type motor.**

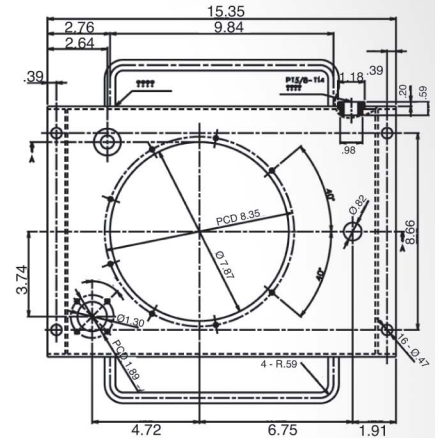
Model Number	Motor (50/60Hz)				Performance				Reservoir	
	Type	AC (V)	Output (HP)	Revolution (rpm)	Max. Pressure (psi)		Output (in <sup>3</sup> /min.)		Capacity Gallons	Usable Gallons
					2nd Stage	1st Stage	2nd Stage	1st Stage		
					High	Low	High	Low		
ZPE-73HS	E	220	1	2,000	10,000	1015	27.5	244	3.17	1.6
ZPE-73L	E	220	1	2,000	10,000	1015	27.5	244	6.34	4.49



**3.17 gallons reservoir with 1.6 gallons usable oil.**  
Part# 924-751



**6.34 gallons reservoir with 4.49 gallons usable oil.**  
Part# 924-752



Standard ZPE-73HS models come with 3.17 gallons reservoir, it has 1.6 gallons usable oil. The best performance pumps for mid-range cylinders and tools. If pumps are used with several cylinders than the extra-large 6.34 gallon reservoirs are suggested, these will provide 4.49 gallon of usable oil to permit full strokes for multiple cylinders.

For Use With	Model Number	Valve		Weight (lbs)
		Type	Function	
Single Acting Cylinder	*ZPE-73HS-0	Basic, w/o valve	With P.T. manifold, without any valves. For applications where directional control valves are remote mounted away from the pump.	150
	ZPE-73HS-1	3 Way manual standard.	A single acting ram is actuated by 3-way manual valve. Advance/Hold/Retract.	160
	*ZPE-73HS-4	2 Way solenoid normally closed	"Advance" with ON switch and motor running. "Hold" when motor stops and switch is released. "Retract" with OFF switch. Advance/Hold/Retract.	160
	*ZPE-73HS-2	2 Way solenoid normally open	"Advance" with ON switch and motor running. "Retract" with OFF switch. Advance/Auto Retract.	160
Double Acting Cylinder	ZPE-73HS-7	4 Way, 3 Position Manual	A double-acting ram is actuated by 4-way manual valve. Advance/Hold/Retract.	152
	*ZPE-73HS-8SP *ZPE-73HS-8WP	4-Way, 3 Position Solenoid (with check valves)	Advance "A" port Hold/Retract with stacking type pilot-operated check valve fitted on "A" port line. ZPE-45SVG-8WP allows pressure holding on both "A" and "B" port lines. Advance/Hold/Retract.	160
	*ZPE-73HG-8A	4 Way, 3 Position Solenoid	ZPE-45SVG is fitted with "A" port block solenoid valve. Open center type solenoid valve is mounted on model ZPE-45SVG-8H pump. Advance/Hold/Retract.	160